

San Juan – Chama  
Watershed Partnership

**Focal Area Atlas**



Rio Chama Congreso  
February 25, 2023

Mary Stuever  
NM Forestry Division



**Acknowledgements...**

**SO MANY OF YOU FOR INPUT,  
SUPPORT, and ENCOURAGEMENT**

**But especially to the “cooks”**

**Joe Carrillo**

**Sage Faulkner**

**Brittany Ferrence**

**Jessica Johnston**

**Emma Kelly**

**Jesse Ramirez**

**Melissa Ryan**

**Caleb Stotts**

**Mary Stuever**





Several years ago... in our own watershed...

**CONVERSATION ON  
HOW TO PUT \$\$\$\$\$\$\$\$  
IN THE BEST PLACES TO  
HAVE BEST IMPACT**

**Private Land Prioritization  
Initiative**



**Catalyst and WaterSMART grants**



**Development of Focal Areas**



**Adaption of Focal Area Concept  
STATEWIDE**



**Inclusion of Focal Areas in NM  
Shared Stewardship Portal**

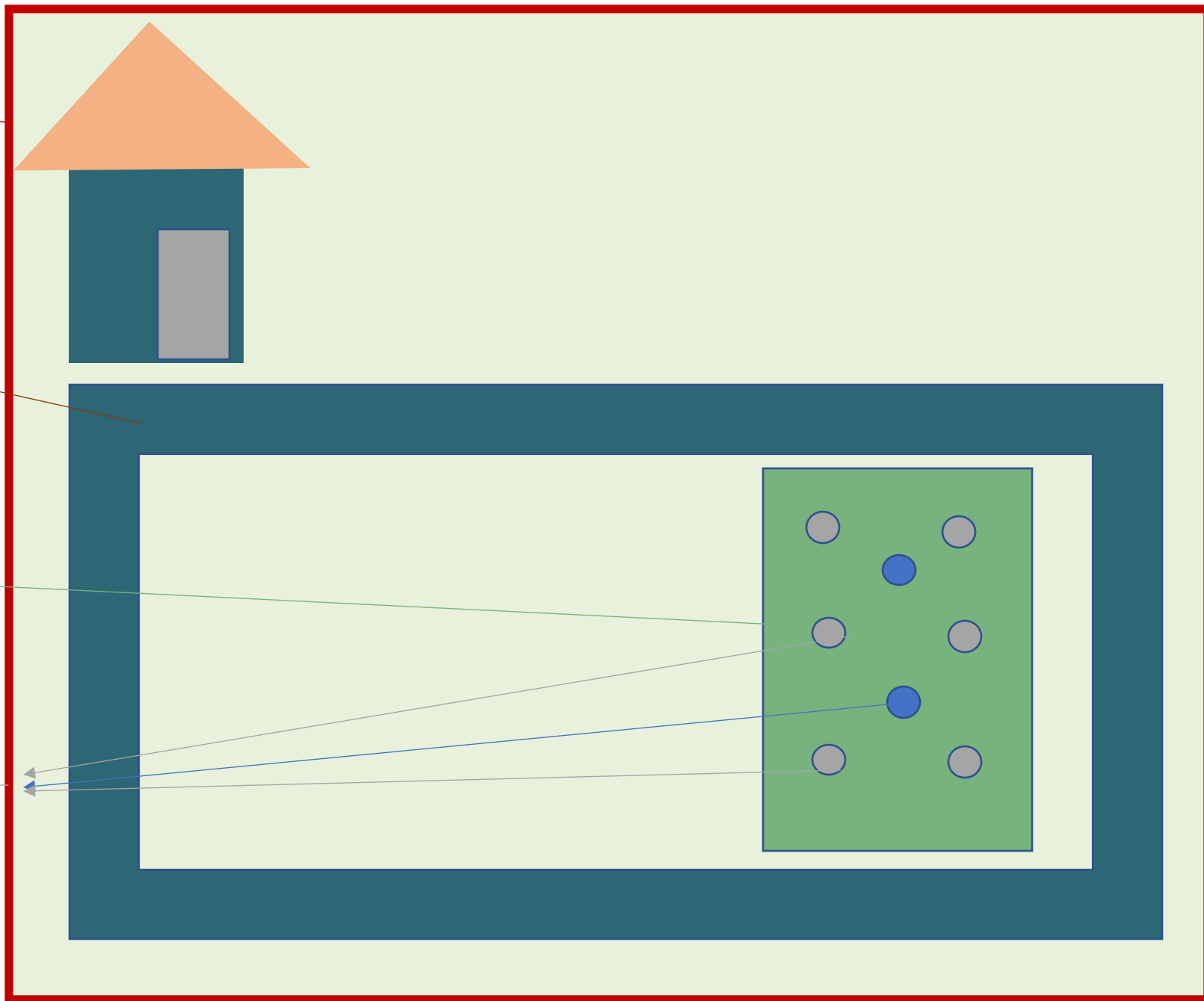


PRIORITY  
LANDSCAPE

FOCAL AREAS

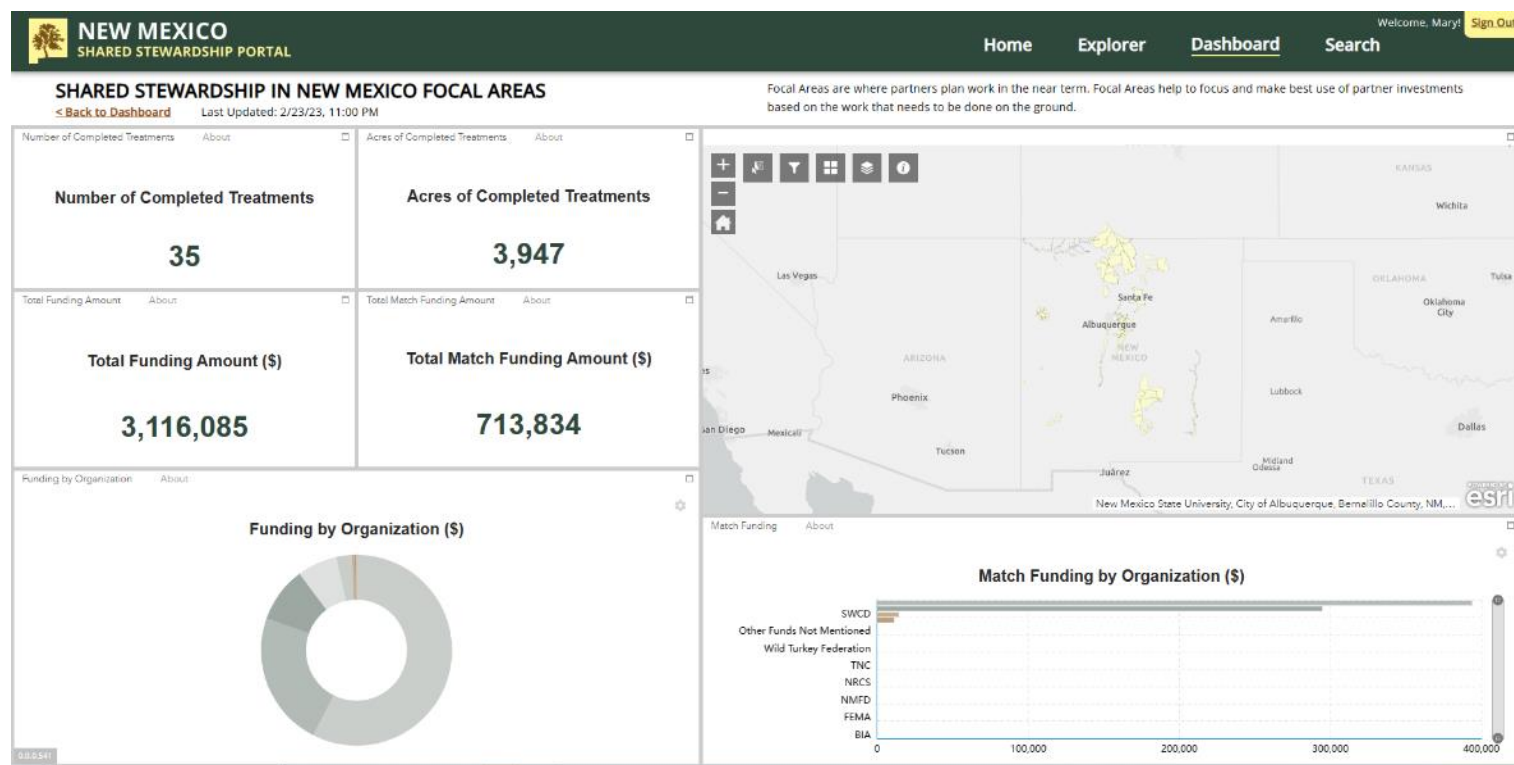
PROJECT AREAS

TREATMENTS/  
ACTIVITIES



# New Mexico Shared Stewardship Portal

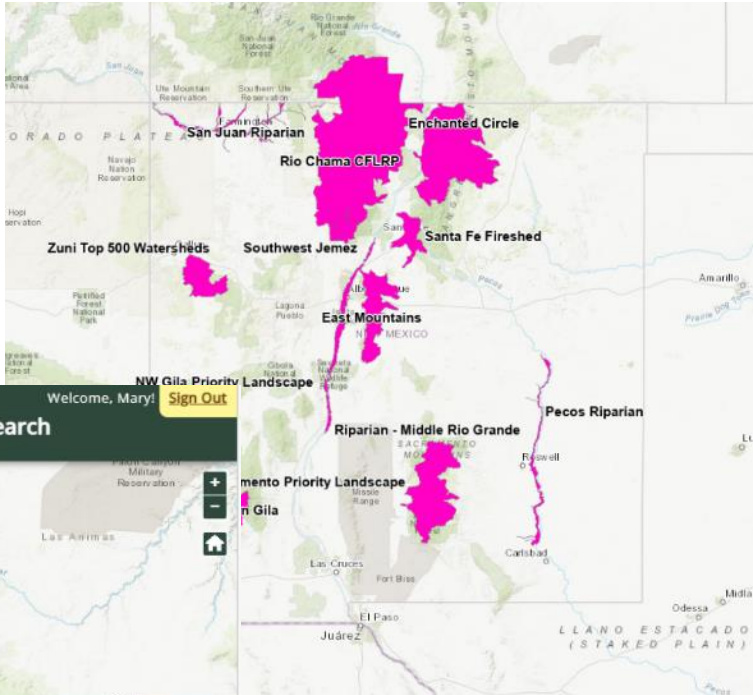
nmssp.org





# Priority Landscapes in New Mexico

## Focal Areas – San Juan Chama FA in Rio Chama CFLR



**NEW MEXICO**  
SHARED STEWARDSHIP PORTAL

Home Explorer Dashboard Search

The main map shows a detailed view of the Rio Chama Catchment Forest Landscape Riparian Program (CFLRP) area. The focal areas are color-coded: Rio Chama CFLRP (blue), San Juan Riparian (purple), Southwest Jemez (magenta), Enchanted Circle (magenta), and Santa Fe Fished (magenta). The map includes topographic details, county boundaries, and major roads. A scale bar indicates 10 miles.

San Juan – Chama  
Watershed Partnership

Focal Area Atlas

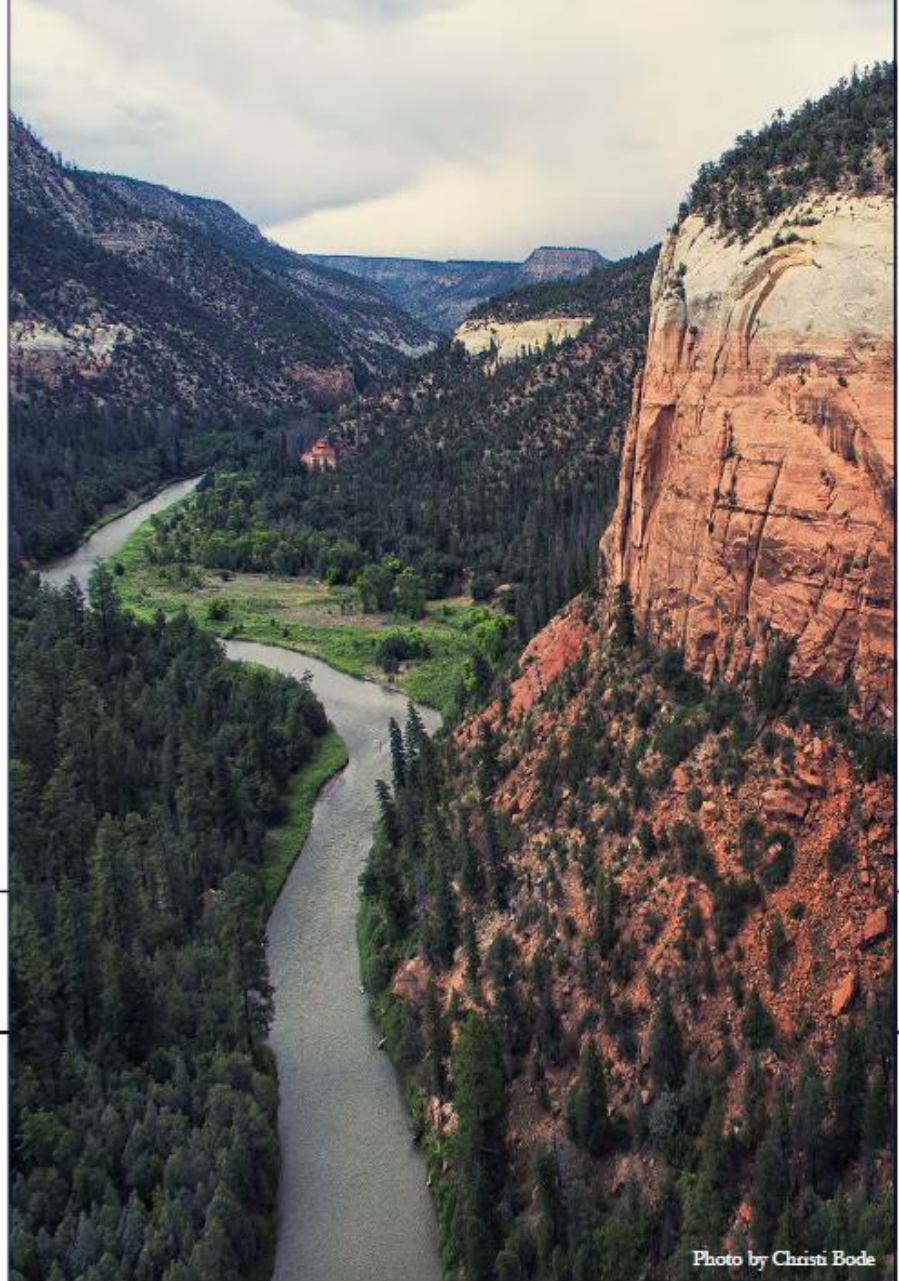


Photo by Christi Bode

February, 2023



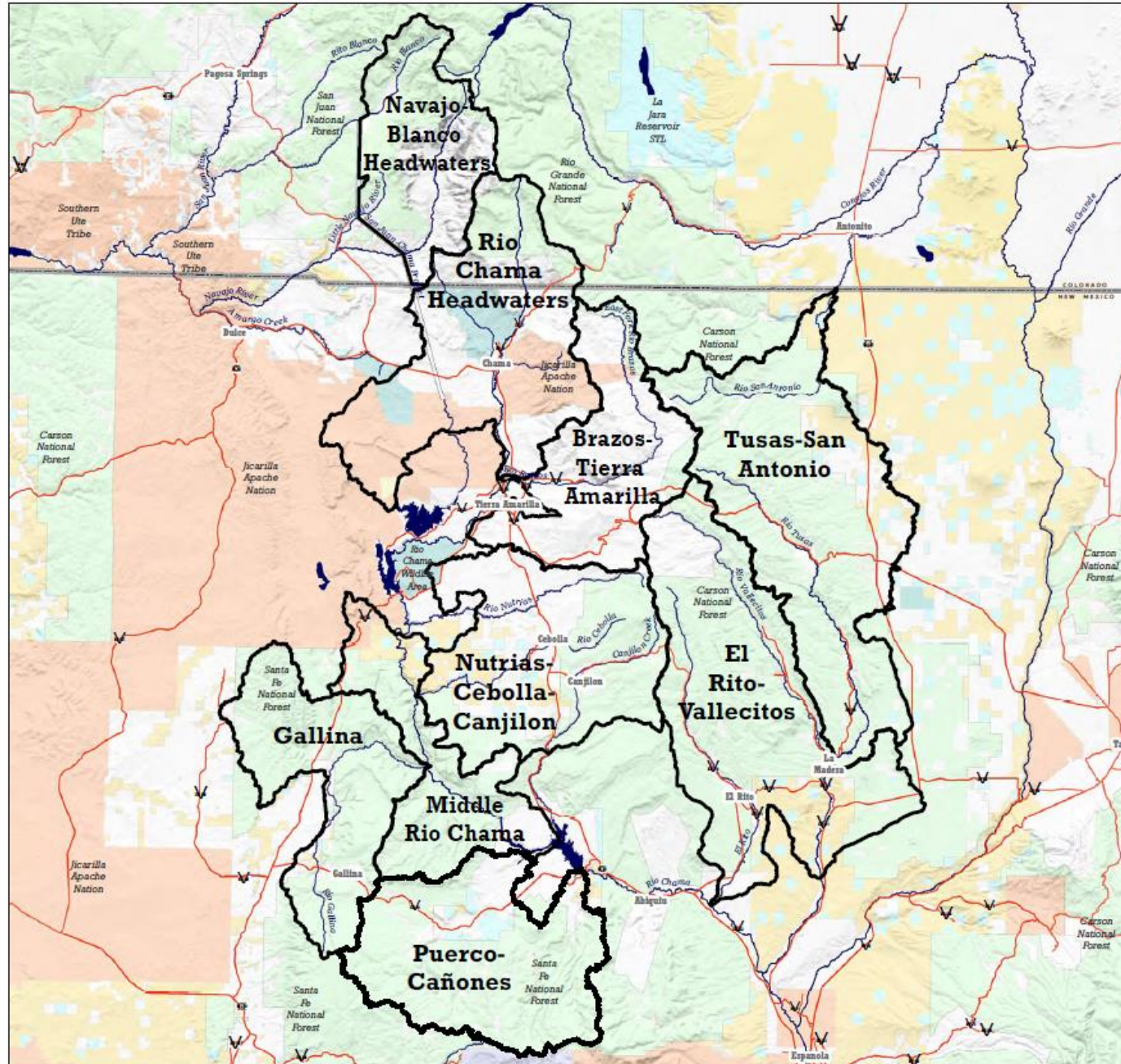
A scenic landscape photograph of a river valley. In the foreground, a river flows through a valley, surrounded by lush vegetation, including several large trees with bright yellow autumn foliage. The middle ground shows a wide, sandy riverbed. In the background, a large, rugged mountain with a mix of green and brown slopes rises under a cloudy sky. The overall scene is a mix of natural beauty and rugged terrain.

# Table of Contents

<b>04</b>	Introduction
<b>06</b>	Overview map
<b>07</b>	Navajo-Blanco Headwaters
<b>13</b>	Rio Chama Headwaters
<b>19</b>	Brazos - Tierra Amarilla
<b>25</b>	El Rito - Vallecitos
<b>31</b>	Tusas - San Antonio
<b>37</b>	Nutrias - Cebolla - Canjilon
<b>43</b>	Gallina
<b>49</b>	Middle Rio Chama
<b>55</b>	Puerco - Cañones
<b>61</b>	Chama - Tierra Amarilla & Vicinity Wildland Urban Interface



# San Juan-Chama Watershed Partnership Focal Areas



-  Focal Area boundary
-  Bureau of Land Management'
-  Bureau of Reclamation
-  Department of Defense
-  US Forest Service
-  Native American Lands
-  National Park Service
-  Private Lands
-  State Trust Land
-  State Game & Fish

1:600,000



Geographic Coordinate System: North American Datum of 1983  
Projected Coordinate System: NAD83 UTM Zone 13 North

U.S. Department of Interior, Bureau of Land Management (BLM), BLM New Mexico Surface Ownership, 2022.

U.S. Department of Interior, Bureau of Land Management (BLM), BLM Colorado Surface Management Agency, 2021.

USGS The National Map: 3D Elevation Program. USGS Earth Resources Observation & Science (EROS) Center: GMTED2010. Data Refreshed March, 2021.

No warranties are made as to the accuracy of this map. This map is for geographical reference only and is not to be used as a survey or legal document.



# Nutrias - Cebolla - Canjilon Focal Area

Acres – 202,021

## Background Information

- This focal area encompasses the Rio Nutrias, the Rio Cebolla, and the upper stretches of Canjilon Creek.
- Private land and lands managed by the Carson NF make up most of the FA, along with BLM and State Trust lands. The northwest corner of this FA includes a small portion of land managed by NM Game and Fish.
- This area is primarily used for grazing and is a popular winter habitat for elk and deer. Ongoing resource concerns in this focal area include elk depredation, forest conditions, brush encroachment, adaptation to ongoing severe drought, highly erosive soils and streambank destabilization including channel incision.
- There is a long history of watershed improvement projects including large scale brush removal, native grass reseeding, erosion control projects, habitat restoration and river restoration.
- NIFC records identify one fire greater than 50 acres, the 2019 Montoya Springs Fire, occurred that intersected this Focal Area since 2000. However, the 2005 Montoya Fire threatened the communities of Canjilon and Placita Garcia and were the catalyst for conducting NEPA and over 12 years of project implementation that has included over 20 activities funded with multiple sources that have collectively treated over 12,000 acres in the area on federal, state, and private lands.

## Source Water Users

- Active surface water irrigation and acequias in the river valleys. This focal area is within La Asociacion de las Acequias Nortefias del Rio Arriba region.
- The village of Canjilon has a Mutual Domestic water supply from a spring. The village of Cebolla has a Mutual Domestic water supply from a well.
- There are many livestock catchment tanks that supply water to livestock and wildlife.

## Water quality

Rio Nutrias (Perennial prt Rio Chama to headwaters) 41.06 miles currently impaired by turbidity and e coli. Rio Cebolla (Rio Chama to headwaters) 23.46 miles not assessed. Canjilon Creek (Perennial portions Abiquiu Rsrv to headwaters) 37.43 miles currently impaired by turbidity, specific conductance, nutrients, and temperature.

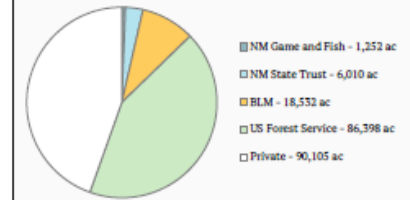
## Threats and Opportunities

- Several communities have been identified at risk of wildfire by the 2017 Rio Arriba CWPP within the focus area and include: the greater portions of Nutrias, Cebolla, and Canjilon as well as a portion of El Vado.
- A large portion of this area is rated as moderate or greater regarding threats from severe wildfire, as well as at risk from postfire erosion.
- The presence of State Trust Lands can facilitate cross-boundary treatments within the focal area where NMED funds can be utilized on the State lands and leveraged for additional Federal private land treatments.
- USFS has identified the Montoya Canyon-Canjilon Creek HUC12 watershed as a priority watershed for CFLRP treatments and monitoring.
- There is an opportunity to implement a collaborative maintenance initiative to maintain treatments in this area, including the opportunity for collaborative prescribed burning and managing fire.

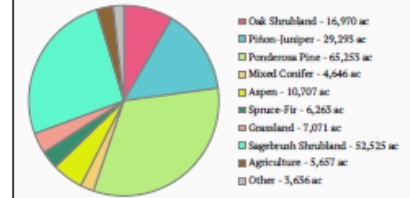
## Known Watershed Plans and Projects

- Watershed protection treatments will also help advance goals listed as part of the Cebolla/Nutrias Watershed Group, 2-3-2 Cohesive Strategy Partnership, San Juan Chama Watershed Partnership, New Mexico Forest Action Plan, Rio Chama CFLRP, Rio Chama Regional Water Plan, Rio Grande Water Fund Cohesive Strategy, Rio Arriba County CWPP, Upper Chama Soil and Water Land Use Plan. Some larger ranches have Forest Management Plans.
- The Carson NF and Santa Fe NF are both participants with the Northern New Mexico Riparian, Aquatic and Wetland Restoration Project NEPA, whose purpose is to maintain or enhance watershed and range health by restoring riparian, wetland, and associated upland and aquatic habitats.
- Rio Chama CFLRP has planned treatments scheduled for FY24-27: Upper Canjilon Creek Watershed Restoration Project
- The Cebolla/Nutrias Watershed Group and livestock associations are very active in planning and implementing conservation projects, including a EPA Section 319 Source Water Protection Grant.
- A cross-boundary (USFS and private lands) proposal for stream and riparian restoration was developed in Canjilon Creek and submitted to NMED River Stewardship Program.
- The Rio Nutrias Watershed Management Plan and the Cebolla/Nutrias Coordinated Resource Management Plan were both published in 2015.
- This has been an active area for forest thinning and management over the last 15 years. Numerous hazardous fuels reduction projects have occurred including the Canjilon-Cebolla Wildland Urban Interface, USFS Bano and the NMSLO Mesa de Los Viejos projects.
- The Cebolla/Nutrias Watershed Group has been awarded the New Mexico Forest and Watershed Restoration Act funding for future forest management projects.
- National Wildlife Federation has created an operational portfolio of priority riparian conservation opportunities in the Upper Rio Grande. This Focal Area contains some of these areas which NWF lists among the greatest opportunities for conservation and restoration to help build resilience into riparian ecosystems of the Upper Rio Grande. The NWF also has completed a "Who is doing what where?" assessment which is available on their website.
- The New Mexico Shared Stewardship Portal provides a shared space for stakeholders to track planned, current, and completed projects that involve natural resources management.

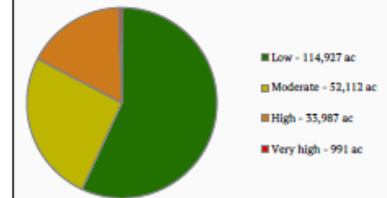
## Land ownership



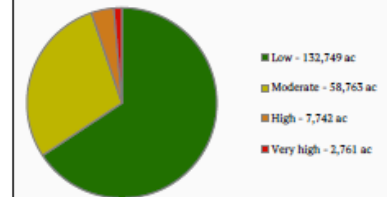
## Major vegetation types



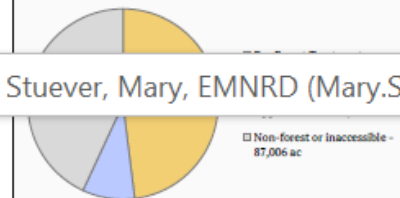
## Threat of severe wildfire



## Threat of postfire erosion



## Forest treatment opportunities

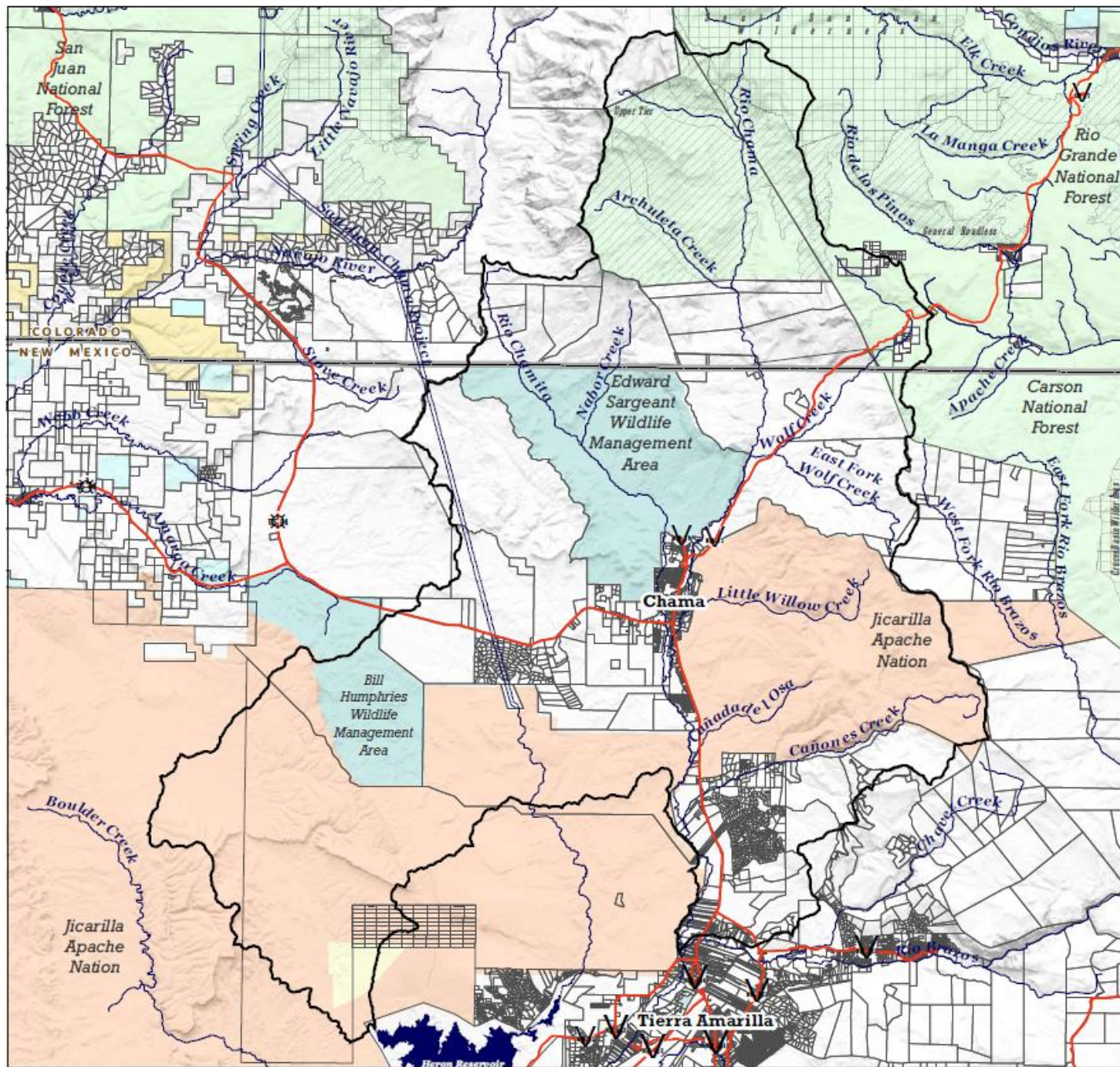
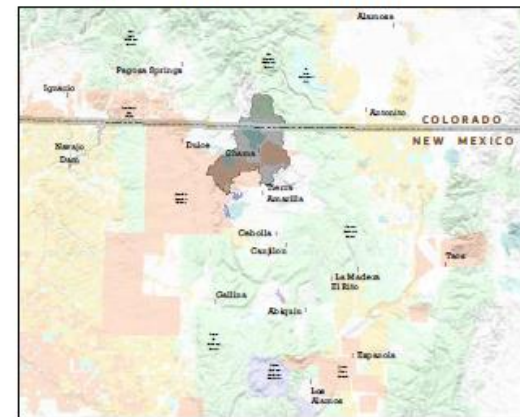


Stuever, Mary, EMNRD (Mary.Stuever@nmsd.gov)



# Land ownership

## Rio Chama Headwaters



- Focal Area boundary
- Parcel boundaries
- US Forest Service
- BOR
- US Forest Service
- Jicarilla-Apache Nation
- Private
- State Game & Fish
- Wilderness
- Roadless Area

1:200,000

0 2.5 5 10



Miles

Geographic Coordinate System: North American Datum of 1983  
 Projected Coordinate System: NAD83 UTM Zone 13 North

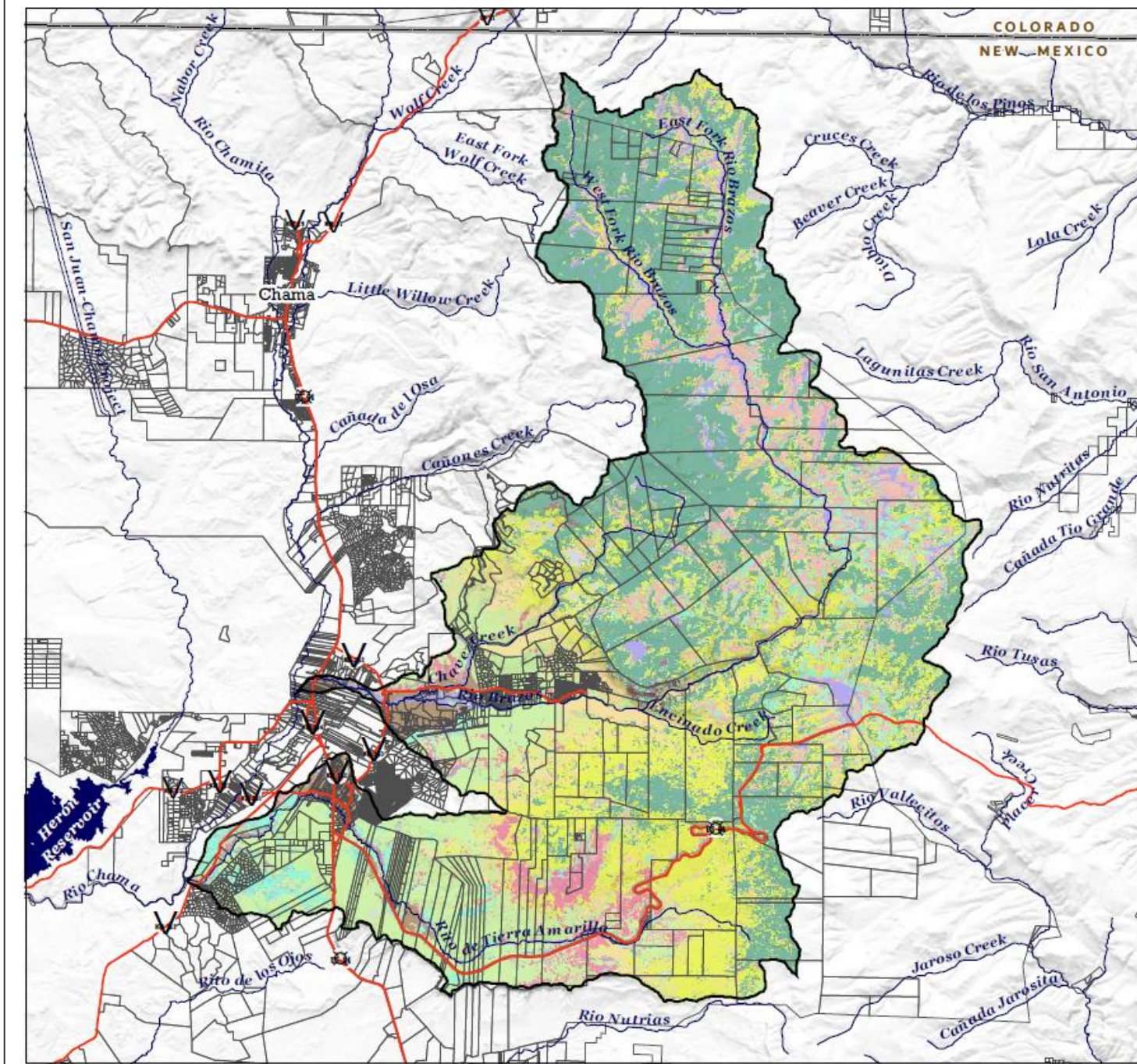
U.S. Department of Interior, Bureau of Land Management (BLM), BLM New Mexico Surface Ownership, 2022.

U.S. Department of Interior, Bureau of Land Management (BLM), BLM Colorado Surface Management Agency, 2021.

USGS The National Map: 3D Elevation Program, USGS Earth Resources Observation & Science (EROS) Center: GMTED2010, Data Refreshed March, 2021.

No warranties are made as to the accuracy of this map. This map is for geographical reference only and is not to be used as a survey or legal document.



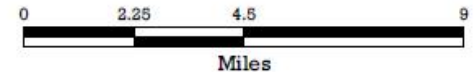


## Vegetation type Brazos-Tierra Amarilla



- Legend**
- Focal Area boundary
  - Parcel boundaries
- Vegetation**
- Agriculture
  - Aspen Forest or Woodland
  - Barren or Sparse Vegetation
  - Developed
  - Grassland
  - Mixed Conifer - Dry
  - Mixed Conifer - Mesic
  - Open Water
  - Piñon-Juniper Woodland or Savanna
  - Ponderosa Pine Forest, Woodland, or Savanna
  - Recently Burned, Logged, or Otherwise Disturbed
  - Riparian Forest or Shrubland
  - Sagebrush Shrubland
  - Oak Shrubland
  - Spruce-Fir Forest
  - Wetland

1:175,000



Geographic Coordinate System: North American Datum of 1983  
Projected Coordinate System: NAD83 UTM Zone 13 North

LANDFIRE Existing Vegetation Type layer, U.S. Department of Interior, Geological Survey, and U.S. Department of Agriculture, 2016. Reclassified by The Nature Conservancy, 2022.

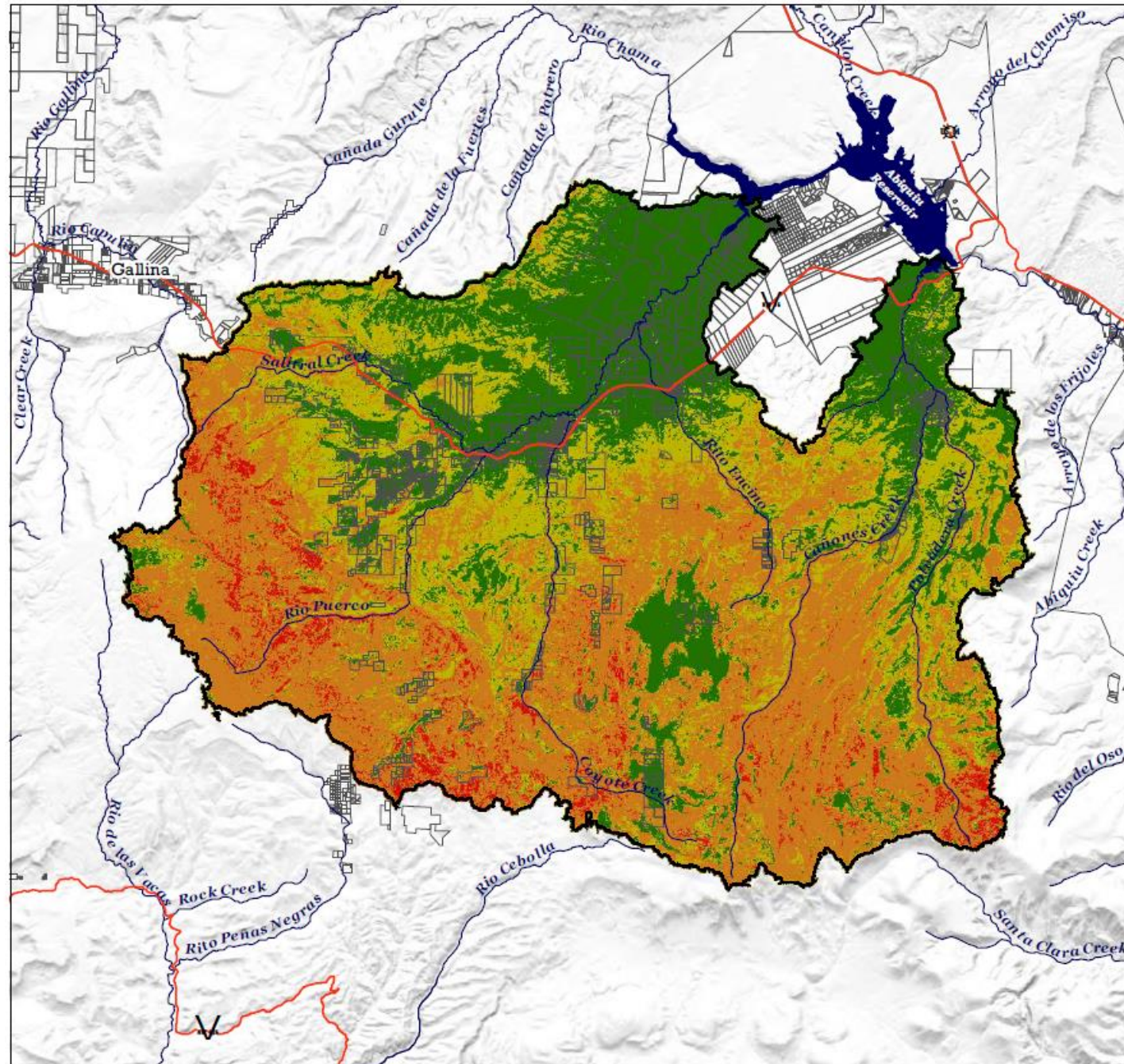
USGS The National Map: 3D Elevation Program, USGS Earth Resources Observation & Science (EROS) Center: GMTED2010. Data Refreshed March, 2021.

No warranties are made as to the accuracy of this map. This map is for geographical reference only and is not to be used as a survey or legal document.



# Threat of severe wildfire

## Puerco-Cañones



Focal Area boundary

Parcel boundaries

Threat of wildfire burn severity

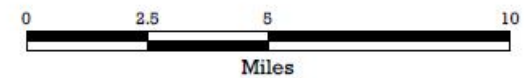
Low

Moderate

High

Very high

1:175,000



Geographic Coordinate System: North American Datum of 1983  
Projected Coordinate System: NAD83 UTM Zone 13 North

Threat of wildfire burn severity. Data published by New Mexico  
Forest Action Plan (NMEAP), 2020.

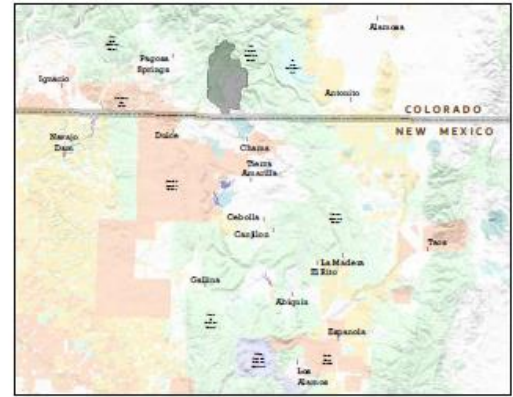
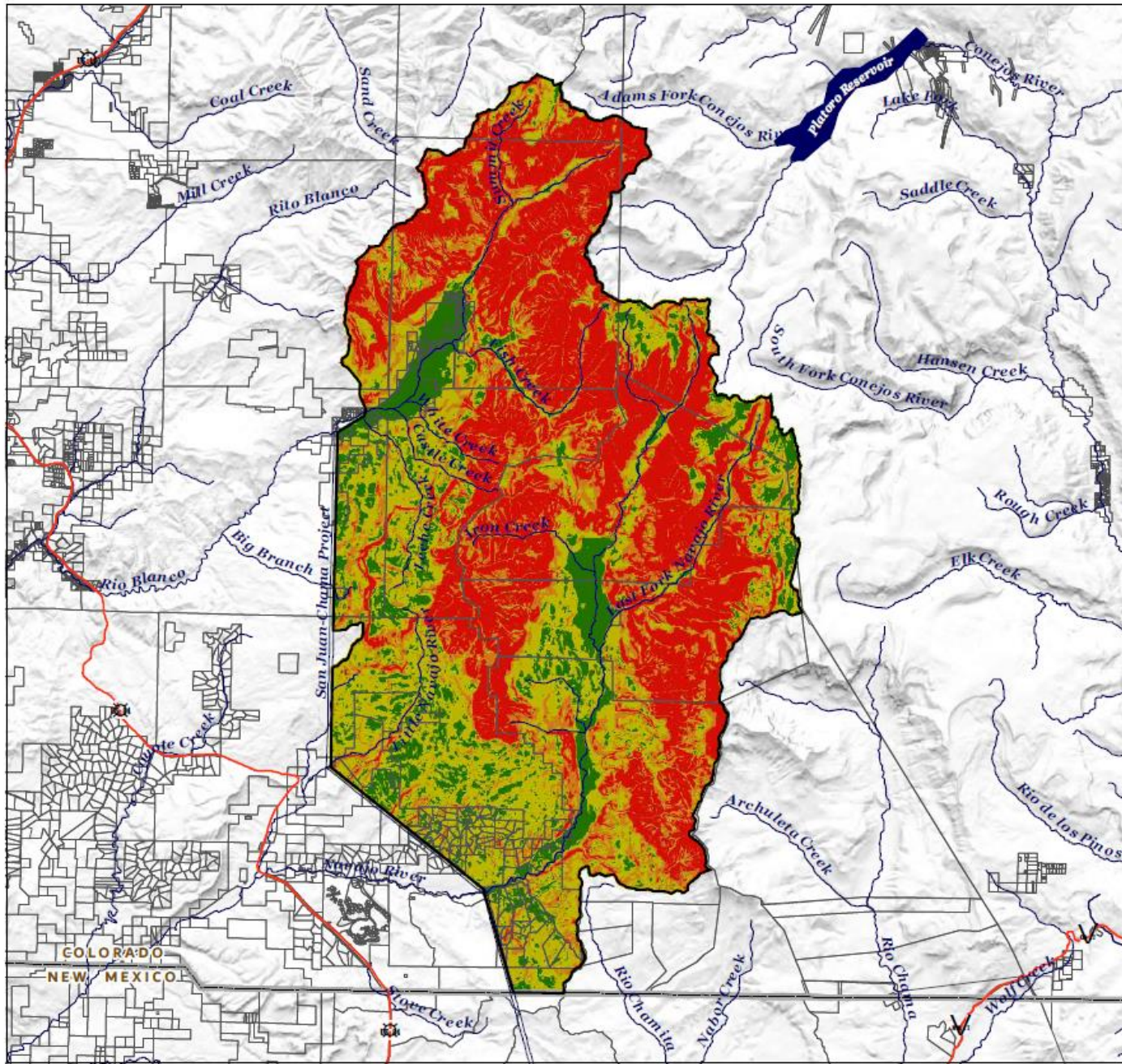
USGS The National Map: 3D Elevation Program. USGS Earth Resources Observation &  
Science (EROS) Center: GMTED2010. Data Refreshed March, 2021.







No warranties are made as to the accuracy of this map. This map is for geographical  
reference only and is not to be used as a survey or legal document.



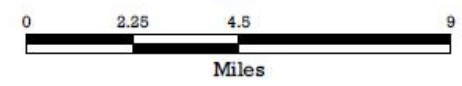
# Threat of postfire erosion

## Navajo-Blanco Headwaters



-  Focal Area boundary
-  Parcel boundaries
- Threat of postfire erosivity index**
-  Low
-  Moderate
-  High
-  Very high

1:175,000



Geographic Coordinate System: North American Datum of 1983  
 Projected Coordinate System: NAD83 UTM Zone 13 North  
 Threat of postfire erosivity index. Data published by New Mexico  
 Forest Action Plan (NMFAP), 2020.  
 USGS The National Map: 3D Elevation Program. USGS Earth Resources Observation &  
 Science (EROS) Center: GMTED2010. Data Refreshed March, 2021.  
 No warranties are made as to the accuracy of this map. This map is for geographical  
 reference only and is not to be used as a survey or legal document.

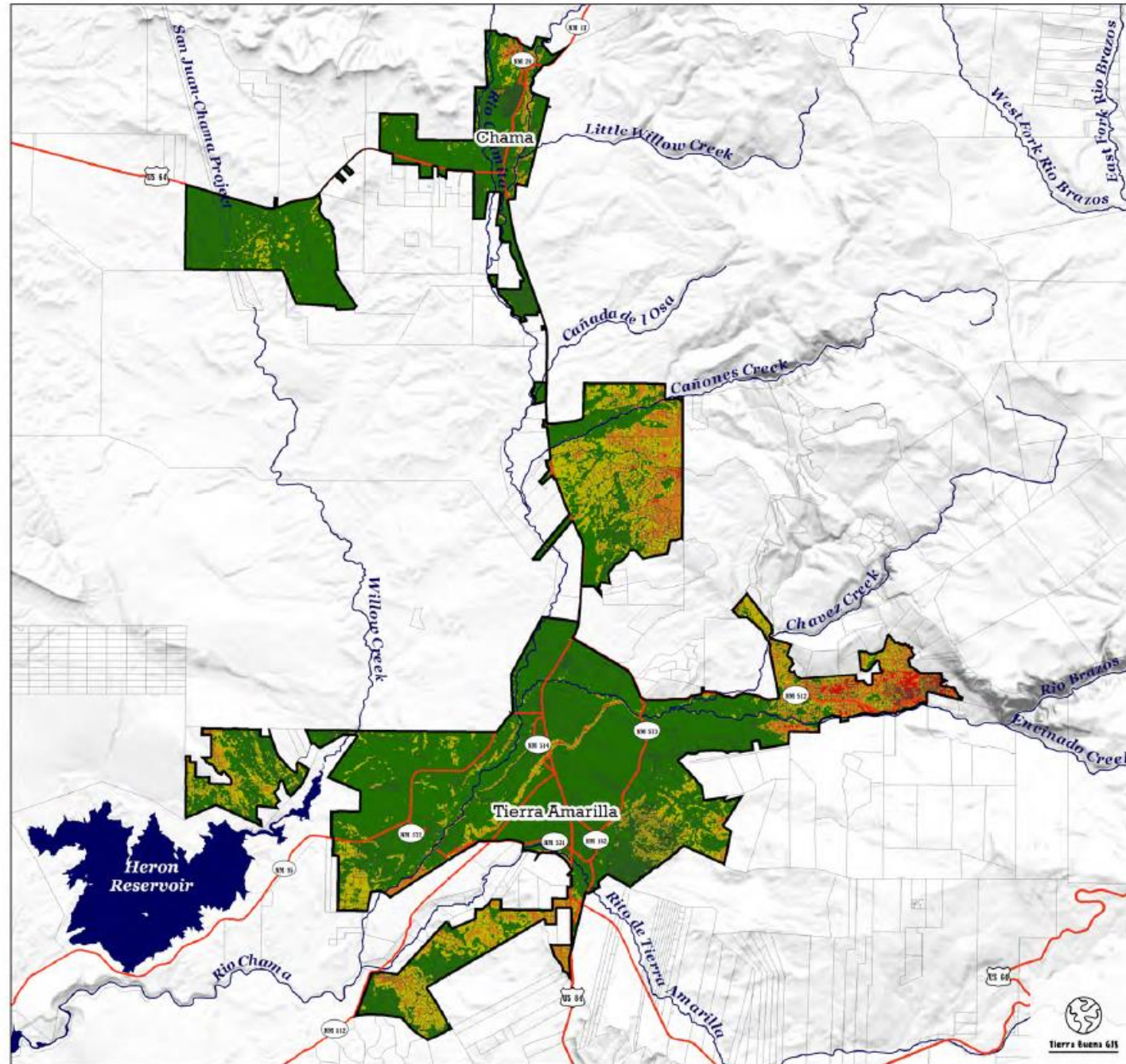






# Threat of severe wildfire

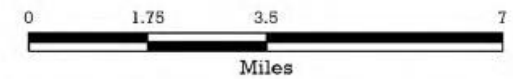
## Chama-TA & Vicinity Wildland Urban Interface



- Focal Area boundary
- Parcel boundaries
- Threat of wildfire burn severity**
- Low
- Moderate
- High
- Very high



1:125,000



Geographic Coordinate System: North American Datum of 1983  
Projected Coordinate System: NAD83 UTM Zone 13 North

Threat of wildfire burn severity. Data published by New Mexico  
Forest Action Plan (NMFAP), 2020.

USGS The National Map: 3D Elevation Program. USGS Earth Resources Observation &  
Science (EROS) Center: GMTED2010. Data Refreshed March, 2021.

No warranties are made as to the accuracy of this map. This map is for geographical  
reference only and is not to be used as a survey or legal document.

