

Fire Adapted New Mexico Learning Network (FACNM)

February 2023



The National Cohesive Wildland Fire Management Strategy (NCWFMS)

- “ The Cohesive Strategy will address the nation's wildfire problems by focusing on three key areas: ”
1. Restore and Maintain Landscapes
 2. Fire Adapted Communities
 3. Response to Fire

A New Fire Management Paradigm



Table 1. Contrasting fire management paradigms (Olson and Bengston 2015)

Dominant Paradigm	New Paradigm
"War on fire"	"Work with the flow" of natural processes
Wildfire is destructive	Wildfire is a necessary natural process
Control wildfire on the landscape	Learn to live with fire on fire-adapted landscapes
Prevent and suppress fires	Create fire-resilient human and natural communities
The problem is that wildfires are escaping our control	The problem is that always suppressing natural wildfire is creating an unsustainable buildup of fuels which results in dangerous "unnatural fire"
The solution is to apply existing procedures and technologies more strongly to bring fires under control	The solution is to develop a more holistic approach to fire management where local communities, adjacent property owners, and governments work together to comanage fire risk



Fire Adapted Communities Coalition

The Fire Adapted Communities Coalition is committed to helping people and communities in the wildland urban interface adapt to living with wildfire and reduce their risk for damage, without compromising firefighter or civilian safety. The coalition provides information and expertise on the development of this website and other activities related to fire adapted communities. For an example of fire adapted communities principles in action, check out this report by the FAC Coalition: ["Lessons Learned From Waldo Canyon"](#) (2 mb, pdf) and the [Report Appendix](#) (2 mb, pdf).





FIRE ADAPTED COMMUNITIES LEARNING NETWORK

About the FAC Learning Network

Our Mission

Our mission is to connect and support people and communities who are striving to live more safely with wildfire. The Network is a catalyst for spreading best practices and innovations in **fire adaptation concepts nationwide**.

The purpose of FAC Net is to exchange information, collaborate to enhance the practice of fire adaptation, and work together and at multiple scales to help communities live safely with fire. This includes embracing resiliency concepts and taking action before, during and after wildfires.

Fire Adapted Communities Learning Network



Network Members

-  core members
-  state-wide networks
-  affiliate members

Washington State Fire Adapted Communities Learning Network

Fire Adapted Montana

Dovetail Partners

Ashland Fire and Rescue

Project Wildfire

Central Oregon Cohesive Strategy

Boise FD

Island Park Sustainable Fire Community

Rapid City Fire Department

Karuk Tribe

Tance Fire & Fuels Team

Utah Division of Forestry

Fire Adapted Colorado

Coalition and Collaboratives

New Jersey Fire Safety Council

Greater Flagstaff Forests Partnership

Wildfire Adapted Partnership

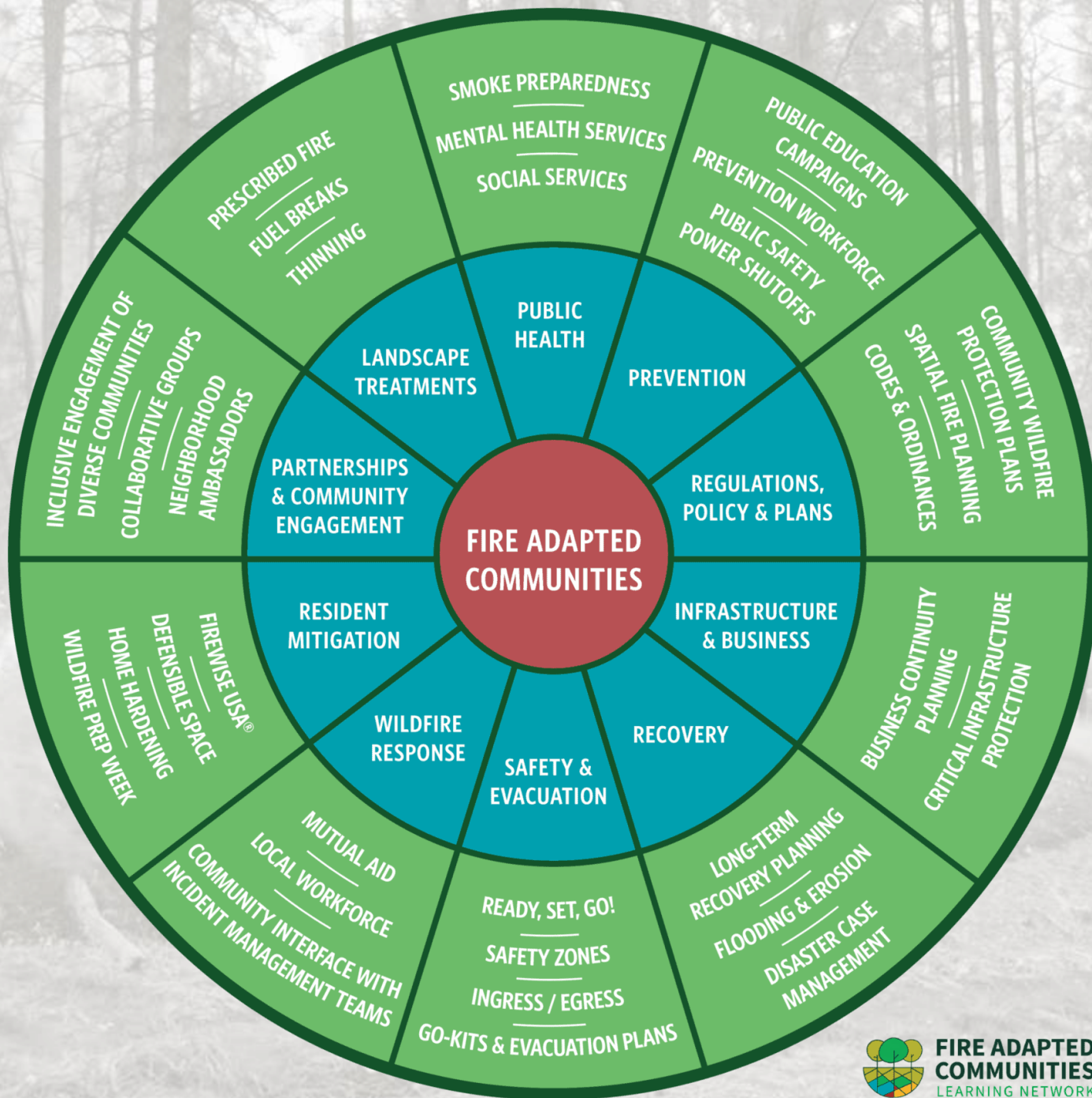
Forest Stewards Guild

Arizona Fire Adapted Communities

Fire Adapted New Mexico

Chestatee-Chattahoochee RC&D Council

Austin FD



From Hierarchy to Networks



Fire Adapted New Mexico learning network



Key Goals of the Learning Network

- Peer-learning
- Relationship building

Fire Adapted New Mexico learning
network

facnm.org



FACNM Leader

Leader: an individual who desires to shape the future and growth of a peer-to-peer network, facilitate learning opportunities and/or member gatherings, and drive the establishment of a common network purpose.



FACNM Member

Member: an individual who desires to be part of a peer-to-peer network, participate in learning opportunities, and contribute to the shared vision and purpose of the network



FACNM Affiliate

Affiliate: an individual who subscribes to the FACNM newsletter, participates in a public event, and is interested in learning more about fire adapted communities.

FAC Practitioner

Practitioner: an individual who practices FAC best practices or whose (professional or personal) work aligns with the creation of more fire adapted communities (a practitioner has the experience to be, but is not by default, a leader, member, or affiliate).



Rolling Membership Application

- Reviewed quarterly
- FACNM coordinator will schedule an onboarding call with you to discuss expectations and resources
- Go to FACNM.org and select “the network

JOIN AS A MEMBER OR LEADER

Questions?

gabe@forestguild.org, FACNM.org

